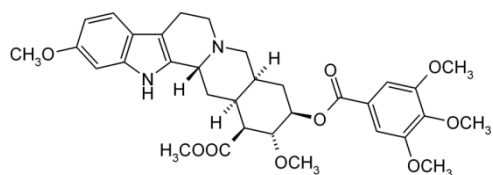


## FAB Analysis of Reserpine



Chemical Formula:  
 $C_{33}H_{40}N_2O_9$   
Molecular Weight: 608

[Mass Spectrum]  
Data : 201 20109-008 Date : 09-May-2012 15:19  
Instrument : MSStation  
Sample : -  
Note : -  
Inlet : Direct Ion Mode : FAB+  
Spectrum Type : Normal Ion (MF-Linear)  
RT : 0.92 min Scan# : (1217) Temp : 3270.7 deg.C  
BP : m/z 73 Int. : 1599.99 (1677090)  
Output m/z range : 12 to 823 Cut Level : 0.00%

